

George Eastman House | **2007 COMPRESSION**



Dear Friends,

We are pleased to share with you the 2007 Annual Report.

Much of what we do at George Eastman House can be divided into three broad categories: caring for the Museum's world-class collections, sharing the collections with the widest audience possible, and training the next generation of caretakers of still and moving images. You will find this report echoes those broad categories.

It is an invigorating task each year to compress 365 days of acquisition, conservation, exhibition, and education into what you now hold in your hands. In preparation of this annual wrap-up, we review thousands of images of the Museum's activities, and in doing so, we are reminded that our successes are the direct result of your support.

Underlying these activities is a financial foundation that is built through the generosity of those who support the mission of George Eastman House: to educate and inspire through photographs, motion pictures, books, technological equipment, and the legacy of George Eastman.

We invite you to share our pride in the accomplishments of George Eastman House. **You make our success possible.**

Sincerely,



Susan Robfogel

Susan S. Robfogel
Chair, Board of Trustees



Anthony Bannon

Anthony Bannon
Director



A group of 112 professional portraits and snapshots (ca. 1920–1945) of various processes were donated to the Museum in 2007 by Diane Dailey.



One of two Kinoton FP 38 E dual 35mm/16mm projectors installed in the projection booth in 2007 as part of ongoing renovation to the Dryden Theatre. This phase of the project was made possible by a grant from the New York State Dormitory Authority championed by New York State Senators Michael F. Nozzolio, James S. Alesi, George D. Maziarz, and Joseph E. Robach. Additional support was provided through the capital grants program of the New York State Council on the Arts.



Inset: In October, the Dryden Theatre hosted the Rochester Premiere of Bruno Dumont's 2006 film FLANDERS. The screening was among 31 premieres throughout 2007.



Top to bottom:

Young visitors watch "mini-movies" through a Zoetrope in the Museum's Discovery Room.

Advanced Residency Program Director Grant Romer examines articles from the collection of the State Hermitage Museum in St. Petersburg, Russia, in June 2007. Romer's visit was part of an ongoing collaboration between George Eastman House and the Hermitage generously funded by the Andrew W. Mellon Foundation.

Director Craig Zobel answers questions in the Dryden Theatre at the Rochester Premiere of his film GREAT WORLD OF SOUND (2007) in October.

2007 details

- 6.2 million pages viewed on all Eastman House websites
- 375,000 visitors to Eastman House traveling exhibitions worldwide
- 138,107 visitors to the Museum
- 47,645 objects acquired
- 9,000 students and teachers served
- 7,151 members
- 3,320 on-site researchers
- 530 volunteers
- 480 film screenings as part of 26 series
- 200 members' and public programs
- 117 employees
- 53 students in three Museum schools
- 65 visiting artists, lecturers, and performers
- 40 objects conserved or preserved
- 22 exhibitions on display at the Museum
- 18 traveling exhibitions displayed at 29 international venues



Members' Upstairs/Downstairs Tours include a visit to the house's concrete attic to see the oculus skylight from above.

Below: Museum members Martin Zemel and Laura Fulton are escorted in the archive building by Kristin Dudley, a student in the Museum's Photographic Preservation and Collections Management program offered in conjunction with Toronto's Ryerson University.



In 2007, Museum Trustee Patrick Montgomery donated an early example of a Moviola Model MT 35mm motion picture viewing machine (ca. 1930), which has both a sound amplifier and speaker, for viewing silent and sound (talkies) movies.



A frame enlargement from Gilbert Pratt's 1924 film LONESOME. The Museum loaned the film to eight venues in 2007, including the National Gallery of Art in Washington, DC, the Academy of Motion Picture Arts and Sciences in Los Angeles, CA, and the Munich Filmmuseum in Germany.



GEORGE EASTMAN HOUSE PODCASTS

The Abraham Lincoln Glass Plate: Keys to Preserving the Legacy with Grant Romer

September 13th, 2007



Click on the iTunes button below to subscribe to this podcast!



Grant Romer discusses his department's conservation of the Lincoln glass plate negative. Mr. Romer is the director of the Advanced Residency Program in Photograph Conservation, Photo Conservation Department at George Eastman House, International Museum of Photography and Film. His discussion of the Museum's work with the negative helps us understand the importance of preserving historically significant and unique photographic artifacts from our past, for our future.

To learn more, please visit [George Eastman House](#). To donate, please click [Donate Now!](#)

[Read the rest of this entry »](#)

[Share This](#)

Posted in [Podcast](#) | [No Comments »](#)

Discussing Seeing Ourselves

September 13th, 2007



Click on the iTunes button below to subscribe to this podcast!



Search

Pages

- [About](#)
- [Submit Your Podcast Story Idea](#)

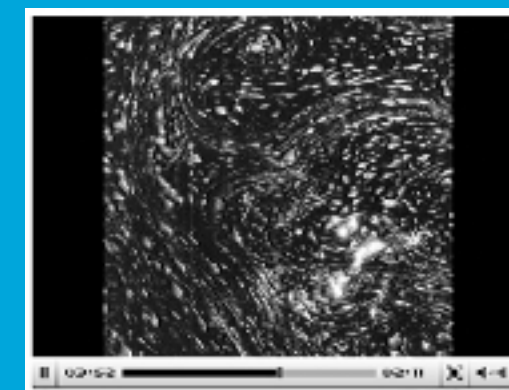
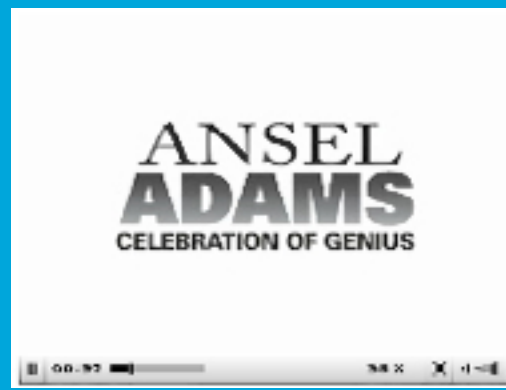
Archives

- [April 2008](#)
- [January 2008](#)
- [November 2007](#)
- [September 2007](#)
- [July 2007](#)

Categories

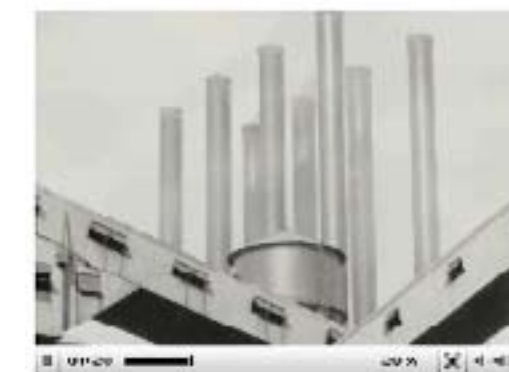
- [Podcast \(12\)](#)

Newly launched in 2007 were video podcasts available for viewing on www.eastmanhouse.org. Narrated by staff and showcasing the rich images of the Museum's collections and exhibitions, the podcasts were created in partnership with Pimzlo Media, Inc.



Associate Curator of Exhibitions Jeanne Verhulst discusses Ansel Adams' work.

Images reproduced courtesy of the Ansel Adams Publishing Rights Trust.



Associate Curator and Archivist David Soures Wooters discusses the Museum's extensive collection of works by Lewis W. Hine.



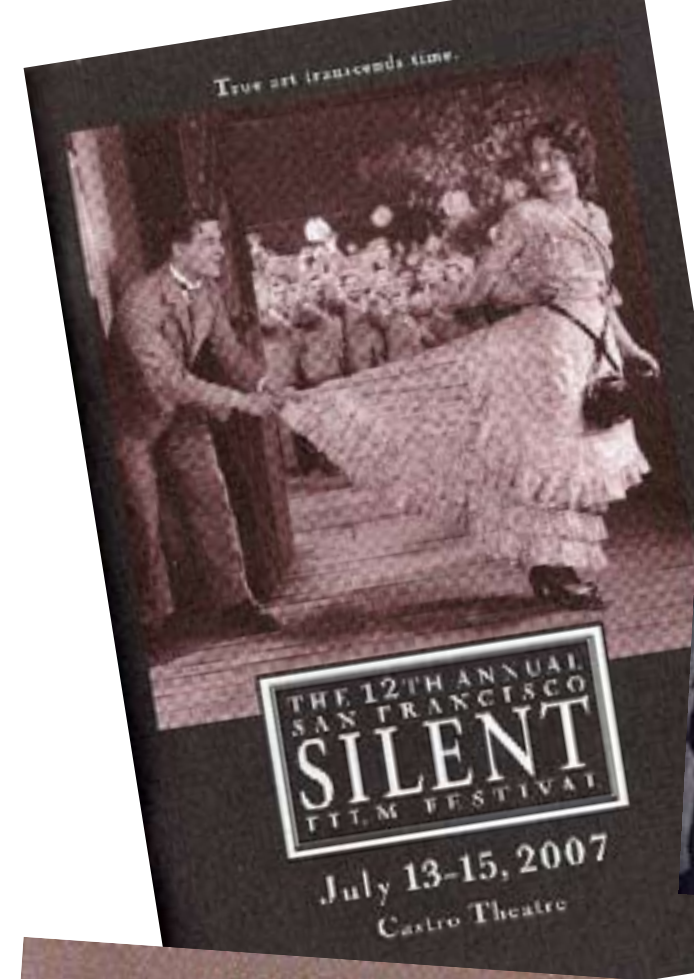
Advanced Residency Program Director Grant Romer discusses the work done in the photograph conservation laboratory.



Curator of Photographs Alison Nordström discusses the Seeing Ourselves exhibition.



This 1920 Lewis W. Hine image of a linotypist in a Southern publishing house is included in African Americans: Black History through Photography, one of 11 Discovery Kits Online available for educators at www.eastmanhouse.org.



Program covers from four of the 19 film festivals that screened films from George Eastman House's motion picture collection in 2007.



David Gibson
Kodak KV270 35mm camera, Vivitar, Japan
Mary A. & David D. Girard
Olympus Stylus camera, Olympus, Japan
Nicholas M. Graver
Fingerprint camera, Burke & James Watson & Holmes, Chicago, Illinois
Richard Haviland
Two prototype stereo cameras, Eastman Kodak Company, Rochester, New York
Theron Holden
16 cameras with lenses and related equipment by various manufacturers
Patrick Montgomery
Moviola Model MT, Moviola Company, Hollywood, California
Robert Schmedes
Voigtländer Bijou Miniature camera, Voigtländer & Sohn AG, Braunschwieg, Germany
Gossen Pilot Meter, P. Gossen & Company, Erlangen, West Germany
Robert Shanebrook
Ansco Reflex II camera, Ansco, Binghamton, New York
Kodak DC 240i camera, transparent display model, Eastman Kodak Company, Rochester, New York
Elizabeth Stewart & Anthony Bannon
8mm film viewer, Aids, Inc., El Segundo, California
Michael D. Sullivan
Retina IIC type 028N, Kodak AG, Germany
Donald Weber
Megalithoscope components, Italy
ROC Ideal View, 8 x 10 inch, J.H. Dallmeyer Landscape Lens, and related publication
Two 4 x 5 cameras and two stereoscope viewers by various manufacturers
Del Zogg
Voigtländer Bessa L body, Voigtländer & Sohn AG, Germany

Purchases for the Collections

Motion Picture Collections

Purchased with funds from Motion Picture Preservation
THE SLUMS OF BEVERLY HILLS (Tamara Jenkins, US 1998), 35mm print

Photograph Collection

Purchased with funds from Horace W. Goldsmith Foundation
ORESTES PURSUED BY THE FURIES, AFTER ADOLPHE WILLIAM BOUGUEREAU from the series *Pictures of Junk*, 2006, framed chromogenic print by Vik Muniz (Brazilian, b. 1961)
DOGS CHASING MY CAR IN THE DESERT (D29F33), 1996–2001 (printed in 2005), framed archival pigment print on rag paper by John Divola (American, b. 1949)
SELF PORTRAIT WITH SAGUARO ABOUT MY SAME AGE, 1999, platinum print by Mark Klett (American, b. 1952)

Purchased with funds from Charina Foundation
FLOOD IN FOREST, 2006/2007, platinum palladium print on handmade Gampi paper by Koichiro Kuriita (Japanese, b. 1943)
RUNNING THROUGH THE WIND, 2004, portfolio of 21 chromogenic prints by Frank Rothé (German, b. 1972)
DARFUR GIRL, 2005, chromogenic print by Ron Haviv (American, b. 1965)
Three gelatin silver prints, by Mark Maio (American, b. 1955) from the series *Against the Grain*, 2005
LAKE ONTARIO, 2001–2007, two chromogenic prints by Robert A. Burley (Canadian, b. 1957)
SÜLEYMANIYE, TAKSIM, 2004, two chromogenic prints by Alex Webb (American, b. 1952)
UNTITLED, COLOMBIA & ARGENTINA, two gelatin silver prints by Cecilia P. Arboleda (American, b. Colombia, 1950)

Purchased with funds from Rebecca B. Abrams & Nathan Benn
NIÉPCE GRAB SHOT AT LE GRAS, 2007, color inkjet print by Christopher James (American, b. 1947)

Purchased with funds from Dr. Mary Cianni
Four gelatin silver prints, 1995–1997, by Vincent Gianni (American, b. 1952)

Purchased with funds from Janet & Thomas A. Fink
THE BROWN SISTERS, 2007, gelatin silver print by Nicholas Nixon (American, b. 1947)

Purchased with funds from Richard Grosbard & Patrick Montgomery
Four gelatin silver prints, from the series *Hutang at Night* by Feng Bin (Chinese, b. 1972)

Purchased with funds from Sandra B. Lane
Three gelatin silver prints, 1994–2001, by Abelardo Morell (American, b. 1948)

Purchased with funds from Edward Osowski

COWSCAPE, 1995–2000, selenium-toned gelatin silver print by Sharon Stewart (American, b. 1955) from the series *Exit West: A Cultural Confluence*

Richard and Ronay Menschel Library Collection

Purchased with funds from Horace W. Goldsmith Foundation
Exposição Pecuaría Nacional em 1888, Lisbon, 1894, portfolio of 51 albumen prints

Technology Collection

Purchased with funds from Technology Acquisition Fund
1900 Kodak Brownie camera, with slide-off back, manufactured in 1900

Conservation & Preservation

Motion Picture Collections

DIE FILMPRIMADONNA (Urban Gad, Projection AG Union, Germany/Denmark, 1913) in collaboration with The Netherlands Filmmuseum
ELK’S CLUB PARADE—ROCHESTER, NEW YORK (The Yale Feature Film Co., Inc., US 1917)
EVERYBODY’S SWEETHEART (Lawrence Trimble, Selznick Pictures Corp., US 1920)
KALEIDOSCOPE (Kodak Research Laboratories, US ca. 1925)
L’INFERNO (Italy 1911) and L’ODISSEA (Italy 1911) in collaboration with Cineteca del Comune di Bologna
MARGARET TALLICHET—“YOUNG IN HEART” SCREEN TEST AND “GONE WITH THE WIND” SCREEN TESTS (Selznick International Pictures, US 1938–39)
THE VOICE INVISIBLE/MAKING A RECORD (American Pathé, US ca. 1919)

Photograph Collection

[Bride, seated], 1907. Fowler (American). Platinum print.
[Brookhaven, 1905], 1905. Alice M. Boughton (American, 1865–1943). Platinum print.
DANCE FROM A NIGHTCLUB ACT, 1943. Anton Bruehl (American, 1900–1982). Color print, dye imbibition.
DAWN & SUNSET, 1885. Henry Peach Robinson (English, 1830–1901). Platinum print ca. 1902 by Ralph Winwood Robinson.
FANNY GILLETTE, ca. 1895. B.J. Falk (American, 1853-1925). Albumen print.
[First haircut], 1943. Victor Keppler (American, 1904–1987). Gelatin silver print.
HOMELESS, ca. 1860. Oscar Rejlander (English, 1813–1875). Albumen print.
IN THE FIELDS, PLUMARCH. A BRETON LANDSCAPE, ca. 1910. Robert Demachy (French, 1859–1936). Oil print.
ISADORA DUNCAN, ca. 1916. Dover Street Studio (English). Carbon print.
KOREAN SOLDIER, 1952. Margaret Bourke-White (American, 1904–1971). Gelatin silver print.
MISS GRACE SUTHERLAND, ca. 1890. Unidentified photographer. Albumen print.
[Mother and daughter], ca. 1940. Frank S. Scherschel (American, 1907–1981). Gelatin silver print.
[Portrait of three women], ca. 1915. Elias Goldensky (American, 1867–1943). Platinum print.
PREPARING FOR THE SABBOT, ca. 1926. William Mortensen (American, 1897–1965). Gelatin silver print.
SOUL OF THE BLASTED PINE, 1908. Anne W. Brigman (American, 1869–1950). Gelatin silver print.
WOMAN WITH VASE OF FLOWERS, ca. 1900. Heinrich Kühn (Austrian, 1866–1944). Gum bichromate print.

One gelatin silver print and five platinum prints by Frederick H. Evans (English, 1853–1943).

One gum bichromate print and eight platinum prints by Gertrude Käsebier (American, 1852–1934).
One gum platinum print and two photogravures by Alvin Langdon Coburn (English, 1882–1966).
One photogravure and five platinum prints by Clarence H. White (American, 1871–1925).
One platinum print, two carbon prints, and seven gelatin silver prints by Edward Steichen (American, 1879-1973).
Two albumen prints by Julia Margaret Cameron (English, 1815–1879).
Two carbro prints and two gelatin silver prints by Nickolas Muray (American, 1892–1965).
Two gelatin silver prints by Ansel Adams (American, 1902–1984).
Two gelatin silver prints, two palladium prints. and four platinum prints by Paul Anderson (American, 1880–1956).
Two glass-plate negatives by Catherine Weed Barnes Ward (American, active

1891–1912).

Two platinum prints by Imogen Cunningham (American, 1883–1976).

Two platinum prints by Edward Weston (American, 1886–1958).

Three salted paper prints by Hill & Adamson (Scottish).

Three glass-plate negatives by an unidentified maker.

Four gelatin silver prints by David Seymour (American, 1911–1956).

Seven platinum prints by F. Holland Day (American, 1864–1933).

Ten lantern slides and three photogravures by Alfred Stieglitz (American, 1864–1946).

Students & Fellows

Andrew W. Mellon Fellows, Fourth Cycle

Karina Beeman, Russia

Luisa Casella, Portugal

Jiuan-jiuan Chen, *Assistant Director for Conservation Education*, Taiwan

Rosina Herrera, Spain

Gustavo Lozano, Mexico

Taina Meller, *Associate Conservator*, Finland

Patrick Ravines, USA

Gawain Weaver, USA

Rachel Wetzel, USA

Katharine Whitman, Canada

Photographic Preservation and Collections Management (PPCM) program w/ Ryerson University, Class of 2007

Olivia Arnone, USA

Ola Dlugosz, USA

Maryam Ghorbankarimi, Canada

Rachel Goldberg, USA

Jessica Gruneir, Canada

Lisa Hennessey, Canada

Elizabeth Knazook, Canada

Jennifer LeBlanc, Canada

Elizabeth Reilly, USA

Jen Roger, Canada

Kate Roze, Canada

Patricia Pena, USA

Stefanie Petrilli, Canada

Emily Shutt, United States

Dawn Vernon, Canada

Alison Skyrme, Canada

The L. Jeffrey Selznick School of Film Preservation, Class of 2007

Antonella Bonfanti, Canada

Sarah Callahan, USA

Airen Campbell-Olszewski, USA

Matthew Cowan, USA

Daniela Currò, Italy

Melissa Levesque, USA

Alice Moscoso, France

Vincenzo Pirozzi, USA

Celine Ruivo, France

Paige Sloan, USA

Stephanie Stewart, USA

Inés Toharia Terán, Spain

Ishumael Zinyengere, Zimbabwe

Graduate Program in Film and Media Preservation, (w/ University of Rochester)

Douglas McLaren, USA



Andrew W. Mellon Fellow Gawain Weaver and

conservation department intern Aurelie Perreux

of France review chromes in the photograph

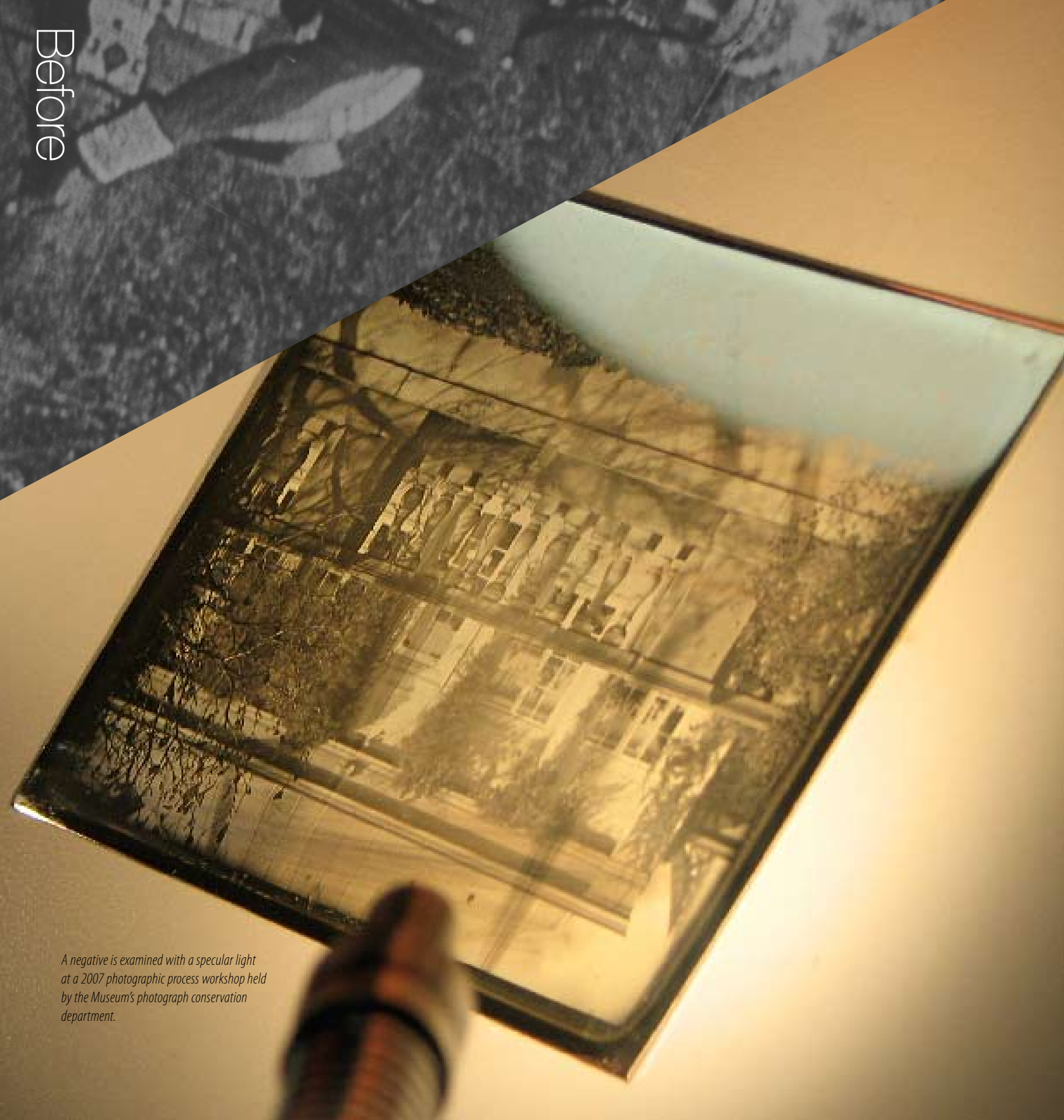
conservation laboratory.

The 2007 graduating class of The L. Jeffrey Selznick School of Film Preservation. Founded by the Museum in 1996, it was the first school of film preservation in North America.

After



Before and after digital restoration of one frame from the film THE INDIAN RAID (1911) directed by James Young Deer. The painstaking process of retouching individual frames for this digital restoration project began in 2007 with the assistance of students in The L. Jeffrey Selznick School of Film Preservation.



A negative is examined with a specular light at a 2007 photographic process workshop held by the Museum's photograph conservation department.

Top: Purchased with funds from Sandra B. Lane, *BOOKS IN TALL BOOKCASE*, 2001 is one of three gelatin silver prints by Abelardo Morell acquired in 2007.

Bottom: An example of stage four decomposition of a nitrate film. To ensure that this type of decomposition is not occurring in collection material, the Museum inspects every reel of nitrate film on a rotating five-year schedule. In addition, the air in the vault is completely replaced every 20 minutes to assure that decomposition gasses do not travel from can to can and contaminate stable film reels.



While internationally renowned for collections and preservation expertise, George Eastman House treasures its role in Rochester, New York. Audiences gather at photograph exhibitions, nightly film screenings, and lectures by visiting artists and scholars. We engage young professionals in conversations with civic leaders, we introduce emerging artists to collectors, and we welcome everyone for community conversations about still and moving images.



Top: Visitors discuss *MOONRISE, HERNANDEZ, NEW MEXICO, 1941*, while viewing the summer 2007 exhibition *Ansel Adams: Celebration of Genius*, made possible by Excellus, Nixon Peabody, Rochester Democrat and Chronicle, and Time Warner.

Bottom: Professional wrestler *Loca Vida* poses for a visitor at the *Lucha Libre: Masked Mexican Wrestlers* exhibition created by George Eastman House and the *Fundación Televisa* of Mexico City, on view from September 15 through January 27, 2008.



Exhibitions

Reflections from the Heart: David Seymour, curated by Alison Nordström (January 20–April 22)

DARFUR/DARFUR, curated by Leslie Thomas (January 20–April 22)

Ghosts in the Landscape: Vietnam Revisited, curated by Alison Nordström (February 17–May 20)

Know War, curated by Rick Hock (January 20–April 22)

The Dutch Connection, curated by Amy Kinsey (February 9–24)

Why Look at Animals?, curated by Alison Nordström (through January 7)

Pete Turner: Empowered by Color, curated by Sean Corcoran (through February 4)

Gerald Slota: Found, a Project Space exhibition curated by Alison Nordström (through February 4)

Hollywood Lost: The Power of Louise Brooks, curated by Caroline Yeager (through February 25)

Machines of Memory: Cameras from the Technology Collection, curated by Todd Gustavson (ongoing)

The Remarkable George Eastman, curated by Kathy Connor and Rick Hock (ongoing)

Voices from South of the Clouds, curated by Alison Nordström and Rick Hock (March 3–May 28)

Ansel Adams: Celebration of Genius, curated by Jeanne Verhulst (May 12–September 3)

Pictures for Ansel: Photography and Environmental Thought, curated by Alison Nordström (May 12–September 3)

Vital Signs: Place, curated by Alison Nordström (June 2–September 30)

What We're Collecting Now III, curated by George Eastman House/Ryerson University PPCM students (June 9–ongoing)

Lucha Libre! Masked Mexican Wrestlers, curated by Rick Hock (September 15–January 27, 2008)

Male & Female: Gender Performed in Photographs from the George Eastman House Collection, curated by Alison Nordström (September 15–January 27, 2008)

The Tease: Burlesque Performers from the 1950s & '60s, curated by Rick Hock (October 13–November 25)

Heroes of Horticulture, curated by Amy Kinsey (December 1–March 2, 2008)

bloom! Experiments in Color Photography by Edward Steichen, curated by Alison Nordström (December 1–February 3, 2008)

Sweet Creations Gingerbread Houses, curated by Kathy Connor (November 14–December 19)

Film Series

Curator's Choice (January–December)

Janet Gaynor: A Centennial Celebration (January–February)

Park Chan-Wook's "Vengeance Trilogy" (January)

Pirate Movies and Swashbucklers (January–February)

Remembering Sven Nykvist (January)

Rochester Premieres (January–December)

Four Mizoguchi Masterpieces (February)

The Cartoons and Comedies of Frank Tashlin (March–April)

Fifty Years of Janus Films (March–April)

A Tribute to Women Filmmakers (March)

Jacques Rivette: Two New Preservations (April)

Auteur Showdown: The Maturation of the American Western (May–June)

Katharine Hepburn: A Centennial Retrospective (May)

Russian Fantastik Cinema (May)

Julie Christie & John Schlesinger (June)

Audrey Hepburn Wednesdays (July–August)

Ennio Morricone: The Maestro and His Movies (July–August)

Not on Video: Season 4 (July–August)

Ecstatic Truths: Films by Werner Herzog (September–October)

The 18th Annual Rochester Labor Film Series (September–October)

Radical!!! Music, Fashion, and "Culture" in the Films of the 1980s (September–October)

Jack Garner Selects (November–December)

Muppets, Music, & Magic: Jim Henson's Legacy (November–December)

Ten Years of Rialto Pictures (November–December)

Guests in person: Patrick Cazals, Skip Elsheimer, Jack Garner, Crispin Glover, Bruce Goldstein, Farley Granger, Pat Healy, Tim Hunter, Lodge Kerrigan, Jeff Krulik, Tony Machi, Joshua Marston, Edward Moran, Albert Paley, Kelly Reichardt, Todd Rohal, Robert Rosen, Ian Ruskin, Ku-Ling Siegel, David Waingarten, Willem Breuker Kollektief, Craig Zobel (January–December)

Premieres of new films from: Canada, China, Denmark, France, Germany, Iran, Israel, Italy, Norway, Portugal, South Africa, Spain, United Kingdom, United States, etc. (January–December)

Programs

This list contains program highlights from 2007. A complete list can be found at www.eastmanhouse.org.

22 visiting motion picture artists and scholars (January–December)

15 visiting photographic artists and scholars, including Michael Adams, Craig J. Barber, Jeff Dunas, Don Fox, Ron Haviv, Janelle Lynch, Willie Osterman, Gerald Slota, Sam Sweezy, Joseph Tamargo, Alexey Titarenko (January–December)

16 exhibition-related events (January–December)

47 members' events (January–December)

31 senior citizen matinees (March–October)

6 musicales (November–December)

5 film festivals (May–October)

8 landscape lectures and events (February–October)

4 George Eastman Society events (January–December)

3 Dryden Film Society events (January–December)

5 New York City Collectors' Club events (January–December)

3 West Coast Collectors' Club events (January–December)

3 Rochester Collectors' Circle events (January–December)

13 family and children's events (October–December)

5 Garden Vibes evening outdoor concerts (July–September)

5 Wish You Were Here travel photography lectures (September–November)

7 miscellaneous special events (January–December)



THE WIZARD OF OZ (1939) was the first American film named in the 2007 United Nations Educational, Scientific and Cultural Organization (UNESCO) Memory of the World Register, established to preserve humanity's documentary heritage. George Eastman House has served as custodian of some of the film's original materials and soundtrack since 1975.



A new 35mm print of a recent preservation of Ingmar Bergman's 1966 PERSONA was screened in the Dryden Theatre in January as part of the film series His Lighting Keeps Us Company: Remembering Cinematographer Sven Nykvist (1922–2006).



Participants in a student poetry reading held in April 2007 in association with the Museum's DARFUR/DARFUR exhibition. More than 150 people attended the program, which was co-presented with Writers and Books.



"Campers" take photos in the Museum's gardens during Summer Photo Fun Workshops for Kids in 2007.



UNTITLED #8 from the series River, 2000, by Janelle Lynch was among three images donated to the Museum by the photographer, and was included in the summer 2007 exhibition Vital Signs: Place.

Treasurer's Report

George Eastman House ended fiscal year 2007 with record-high assets of \$56.9 million, including \$38.4 million in long-term investments, \$3.9 million in pledges and grants receivable, \$4.1 million in cash and other current assets, and \$10.5 million in fixed assets. The \$38.4 million in long-term investments reflects an investment return of 6.55% on the Museum's general endowment fund for 2007, outperforming its composite benchmark of 5.43% for the year. The \$4.1 million in cash and other current assets is an increase of \$2.7 million over 2006, due primarily to a grant of \$3.0 million received at year-end from the Andrew W. Mellon Foundation to establish an endowment for the Museum's conservation efforts. Overall, total assets at year-end were \$2.9 million or 5.4% over year-end 2006. In keeping with standard museum practice, George Eastman House does not capitalize its collections.

The Museum reported operating income of \$7.9 million in 2007, an increase of \$0.8 million or 10.1% over 2006. Of the \$7.9 million, \$4.4 million came from contributions and government grants, underscoring the importance of our members and donors to our many collections and programs. George Eastman House also drew \$1.3 million in

investment income from its endowments in support of operations, made possible by those who have contributed so generously to our endowments over the years. Earned income reached \$2.2 million for the year, an increase of 26.1% over 2006, attributable primarily to the impact of the Ansel Adams exhibition in 2007 and to the Museum's traveling exhibitions program, which grew 46.3% over 2006. In total, George Eastman House generated a small operating surplus for the year.

The accompanying charts and summaries highlight the Museum's financial position and performance for 2007. The financial statements are audited by the accounting firm DeJoy, Knauf and Blood, LLP, and copies of the audited financial statements may be obtained free of charge by calling or writing the Museum's controller.

Lisa A. Brubaker, *Treasurer*

Condensed Statement of Financial Position

December 31, 2007

ASSETS

Current assets:

Cash and cash equivalents	\$ 4,110,674
Pledges and grants receivable	\$ 2,022,388
Accrued interest receivable	\$ 33,373
Eastman House Store inventory	\$ 116,870

Total current assets \$ 6,283,305

Long-term assets:

Pledges and grants receivable	\$ 1,772,248
Fixed assets, net	\$ 10,480,780
Long-term investments	\$ 38,359,596

Total long-term assets \$ 50,612,624

Total assets: \$ 56,895,929

LIABILITIES AND NET ASSETS

Current liabilities:

Line of Credit	\$ 258,641
Accounts payable	\$ 203,785
Accrued expenses	\$ 153,441
Deferred revenue	\$ 241,497

Total current liabilities \$ 857,364

Net assets: \$ 56,038,565

Total liabilities and net assets: \$ 56,895,929

INCOME

Contributions	55%
Investments	19%
Fees and misc.	13%
Admissions	5%
Government grants	8%
Total	100%

EXPENDITURES

Programs	81%
Management and general	11%
Fundraising	8%
Total	100%

Inger M. A. Elliott
Janet & Thomas Fink
Mr. & Mrs. George M. C. Fisher
Mr. & Mrs. Richard C. Fox
Mr. & Mrs. M. Wren Gabel
Mr. & Mrs. John L. Garrett
Mr. & Mrs. Kevin P. Gavagan
Mr. & Mrs. Kevin E. Glazer
Suzanne Gouvernet
Howard Greenberg
Mr. & Mrs. James L. Hale
Mrs. Hiram G. Hanson
Mrs. Alexander D. Hargrave
Ellen Henry & Eric Zeise
Walter B. D. Hickey Jr.
Mr. & Mrs. Robert H. Hurlbut
Mr. & Mrs. Robert D. Hursh
Mr. & Mrs. Frank M. Hutchins
Dr. & Mrs. Thomas H. Jackson
Mr. & Mrs. Thomas F. Judson Jr.
Howard E. Konar
Mr. & Mrs. John F. Kraushaar
Mr. & Mrs. David E. Lane
Carolyn & Michael Lariton
Victoria Lehr & William Cherry
Mrs. John R. Leinen
Olive S. Lennox
Gunta Lidors & Duncan T. Moore
Dawn & Jacques Lipson, M.D.
Karen & Edward Judus
*Mr. & Mrs. Jeffrey C. Mapstone
Mr. & Mrs. Richard Massie
William P. McCarrick
Gilbert Kennedy McCurdy
Dr. & Mrs. W. D. McHugh
Mr. & Mrs. George F. Medill
Daniel M. Meyers
Mrs. Harold C. Miller
Marjorie & Drew Morris
Mrs. William H. Morris
Sharon & Robert Napier
Mrs. William J. Napier
Marjorie & David Perlman
Mr. & Mrs. Charles Pettit
Patricia B. Prince
Mrs. B. McNally Ravenel
Mr. & Mrs. Leonard E. Redon
Mrs. David B. Reed
Dr. & Mrs. Ronald Reed
Mr. & Mrs. Paul F. Roland
Mr. & Mrs. Ned W. Roman
Deborah Ronnen & Sherman Levey
Mr. & Mrs. Harris H. Rusitzky
Jean G. Ryon
Paul Sack
Marianne Samenko
Mr. & Mrs. Robert Sanchez
Mr. & Mrs. Mark A. Schneider
Mr. & Dr. Joel Seligman
Margaret S. Skow
Mr. & Mrs. Frederick A. Stahl
Elizabeth Stewart & Anthony Bannon

*Dr. & Mrs. James C. Stoffel
Betty Strassenburgh
William N. Thompson
Laura J. Thurner
Lisa C. Townson
Mrs. Robert P. van der Stricht
Mrs. John L. Wehle Jr.
Mr. & Mrs. Philip K. Wehrheim
Mr. & Mrs. Glenn William

Benefactor (\$500–\$999)
Mrs. Robert E. Bannon
Mr. & Mrs. Simon Braitman
Mr. & Mrs. James T. Briggs
Mr. & Mrs. Joseph C. Briggs
Mr. & Mrs. James S. Bruce
Sonya L. Burgher
Sarah S. Clapp
Mr. & Mrs. Ira B. Current
Donald A. D'Alessandro
Richard H. Eastman
Mrs. Walter A. Fallon
Albert O. Fenyevessy
Mr. & Mrs. Dixon Gannett
Mrs. Richard Garrett Sr.
Dawn Good Elk & Reuben Auspitz
Marsha R. Gottovi
Stefanie & James Gramkee
Mr. & Mrs. John B. Hood
Karen & Edward Judus
Mr. & Mrs. Cameron Jameson
Dennis P. Kessler
David H. Klein
Janet & Haines Lockhart
Arthur E. Lowenthal
Mrs. William P. Manry
Mr. & Mrs. Gilbert G. McCurdy
Dr. & Mrs. Edward M. Messing
Mrs. William B. Morse
Mr. & Mrs. Philip Neivert
Mr. & Mrs. Raymond F. Newell Jr.
Mr. & Mrs. John S. Parke
Dr. & Mrs. Edwin P. Przybylowicz
Herbert L. Rees
Phyllis Rifkin-Russell & Steven Russell
Dr. & Mrs. James Robotham
Mr. & Mrs. Albert L. Sieg
Marsha & Eric Slavens
Mr. & Mrs. Frank M. Stotz
Mr. & Mrs. Herbert W. Watkins
Mr. & Mrs. Walter H. Wells
Patricia & Michael Wilder

Patron (\$250–\$499)
Anonymous (2)
Dr. Maria J. Abeyouinis
Elaine & David Anselm
Gloria Baciewicz & Eugene Schneider
Mr. & Mrs. William C. Baird
Dr. Lon Baratz
Jennifer M. Beckley
Suzanne Bell & Christopher Brown

Robert Bermudes Jr.
Anita & Philip Bonanni
Dr. & Mrs. John R. Bosco
Mr. & Mrs. G. Sheldon Brayer
Helen D. Brooks
Dr. & Mrs. Francis E. Browning
Richard F. Brush
Catherine Gallery & Michael Nazar
Mr. & Mrs. Darryl Canfield
Mr. & Mrs. John Carroll
Katherine Castern & James Healy
Ernestine M. Chandler
Dorothy L. Chapin
Mr. & Mrs. Langdon F. Clay
Mrs. E. Garrett Cleary
Arlene L. Copeland
Dr. & Mrs. Albert B. Craig Jr.
Mr. & Mrs. John Crowe
Mrs. R. Bruce Davey
Randy R. DeFrank
V. Rodger Digilio
Mr. & Mrs. Eugene C. Dorsey
Janet & Richard Dray
Dr. & Mrs. Brent DuBeshter
Mr. & Mrs. Richard H. Eisenhart Sr.
Tim Eldred
Mr. & Mrs. Sherman Farnham Jr.
Jody M. Fleischer
*Sheila & Bruce Foster
Valerie T. Freund
Betsy & Jay Friedman
Mr. & Mrs. Harry W. Fulbright
Bonnie & Jack Garner
Hubert Gasteiger
Dr. & Mrs. Winston Gaum
Tyrone Georgiou
Dr. Carl Gerard
Jacquie & Andrew Germanow
Mr. & Mrs. Robert V. Gianniny
John A. Gillette Jr.
Bonnie Gordon & John Pfahl
Mr. & Mrs. Nicholas M. Graver
Mr. & Mrs. George Greer
Dr. & Mrs. Robert J. Haggerty
Howard T. Hallowell III
Mr. & Mrs. William Z. Harper
Dr. & Mrs. Paul C. Harrington
Dr. & Mrs. H. R. Herrera
Mr. & Mrs. Samuel Hodgetts
Mrs. Samter Horwitz
Mr. & Mrs. Ernest J. Ierardi
Mrs. Vincent S. Jones
James A. Joss
Mrs. Albert D. Kaiser Jr.
Robert L. Keck
Mr. & Mrs. David L. Kendall
Dr. Ernie Kerr
Edwine Danforth Kimberly
Laura & William Koenig
Bernard Kozel
Mr. & Mrs. Harold A. Kurland

*Dr. & Mrs. Sheldon A. Lane
John L. Langdon
The Larson Family
Dr. & Mrs. Anthony J. Leone Jr.
Ellen Leopold & Howard Beckman
Loma M. Allen
Thomas A. Allen
Dr. Mattie E. Alleyne
Dr. & Mrs. E. David Appelbaum
Mr. & Mrs. Thomas R. Argust
Mr. & Mrs. Julian W. Atwater
Mr. & Mrs. Burton S. August
Mr. & Mrs. Gordon C. Baird
Susan Bargmann
John H. Barnes
Stephen Bauer
Erna & John Baum
Richard L. Bent
Margaret Berens
Joanne Bernardi & Dale Burali
Barbara Billingsley
Susan & John Bixler
Dorothy Reese Bloomfield
Mr. & Mrs. Alfred G. Boylan
William A. Bradley
Mr. & Mrs. Robert L. Bretz
Laura Brewer & Frank Zwemer
Garth E. Brokaw
Karen S. Brown
Mr. & Mrs. Radford T. Brown
Renee & Charles Brown Jr.
Dr. & Mrs. George G. Browning
Roger R. Bruce
June I. Brush
Anne & William Buckingham
Margaret & David Burns
Patrick Cain
Mr. & Mrs. R. Carlos Carballada
Mrs. Richard D. Castle
Mr. & Mrs. Wilmot V. Castle Jr.
Mrs. William A. Centner
Derek Chase
George Cheatile
Dr. & Mrs. Alfred Clark Jr.
Mr. & Mrs. Gerald R. Clifford
Mr. & Mrs. George T. Conboy
Mr. & Mrs. Spencer J. Cook
Dr. Walter Cooper
Louise & John Creatura
Mr. & Mrs. Jacques Delettretz
David Deming
Nancy Watson Dean
Mary E. Derby
Linda & Richard D'Etto
Mr. & Mrs. James C. Eaton
Mr. & Mrs. Joseph H. Eberly
Dr. & Mrs. Stephen Edwards
Susan & Steven Eisinger
John A. Esty
Craig Everhart
Lynne Feldman & Anthony Suchman
Trish & Dan Fischer
Mr. & Mrs. Donald C. Fisher

Joan & Harold Fletcher
Nancy T. Foster
Elinore & Eugene Fram
*Gerleen & Thomas Frederick
Anthony Frothingham
Laura Fulton & Martin Zemel
Muriel & Robert Gabbey
Carol & Nicholas George
Karen & Ross Gibson
Mary Ann Giglio
Linda G. Gillim
Roslyn & John Goldman
Sandra & David Goldman
Mr. & Mrs. Newton H. Green
Norene & Lawrence Green
Dr. & Mrs. Donald R. Grinols
Marian Griswold
Mr. & Mrs. Robert J. Guerin
Alfred H. Guhl
Dr. & Mrs. Robert P. Gulick
Todd F. Gustavson
Dr. Laurence B. Guttmacher
Mrs. Harold S. Hacker
Mr. & Mrs. Alfred M. Hallenbeck
Michael J. Hardy
Mr. & Mrs. Mark C. Hargrave Jr.
Barbara & Daniel Hart
Lori & Eren Hart
*Paul Hasbrouck
Herbert J. Hawley
Michelle Hendrix
Mr. & Mrs. Robert W. Heyer
Mr. & Mrs. Bryan D. Hickman
Mr. & Mrs. James D. Holland
Dr. & Mrs. Joshua Hollander
Kathleen Holt & Stephen Lurie
Mrs. John C. Hoppe
Dr. & Mrs. Robert E. Horn
Mr. & Mrs. William N. Hosley
Mr. & Mrs. Jerome L. Huff
Mr. & Mrs. Robert J. Hughes
Mary M. Huth
Sherrill & James Ison
Dewey T. Jackson
Judith & Stuart Kaplan
Rev. Sharon & Rev. John Karl
Heidi Katz & Carl Chiarenza
Ann & Thomas Kelly
Robert S. Kenyon
Mr. & Mrs. Myron L. Kerney
Florence Kerr
Trudie & Ronald Kirshner
Mr. & Mrs. William C. Klein
Mr. & Mrs. Clement Knight
Mr. & Mrs. James E. Koller
Sandra & James Koon
Ange & John Kosboth
Anthony M. Koscumb
Mr. & Mrs. Gerald P. Kral
Mr. & Mrs. James P. Kraus Jr.
Susan & Bruce Krobusek

Joan W. Labrum
Maria Lauriello-Klein & Aaron Klein
Sue & Bruce Lawrence
Mr. & Mrs. John Lazor
Susan Lee & Steve Fielding
Mr. & Mrs. Vincent A. Lenti
Howard LeVant
Mr. & Mrs. William H. Levitt
Robert Liddle
Mr. & Mrs. Kenneth Link
Anne Lloyd
Jean Lowe & Alan Reddig
Nancy D. Lowthian
Mr. & Mrs. Edward J. Lynd
Mr. & Mrs. Edward G. MacDonald
Bernice M. Mahar
Mr. & Mrs. James F. Mangan
Mr. & Mrs. James W. Maurer
Suzanne & Sanford Mayer
Nancy & Dan McCormick
*Barbara C. McIver
Mr. & Mrs. Lawrence L. McKnight
Eleanor & Bruce McLearn
Mary Lou Medley
Judith A. Miller
Mr. & Mrs. Robert S. Minemier
Mary Miskell & Terrance Clar
Mr. & Mrs. Theodore Morse
William C. Murphy
Dr. & Mrs. Nicholas E. Nicosia
Laura & Dennis O'Donnell
Sandra O'Donoghue
Dresden Engle Olcott
Mr. & Mrs. Patrick O'Malley
Patricia A. O'Neill
Joyce & George Parker
Katharine S. Parsons
William A. Peasley
Deborah Perticone
Mr. & Mrs. Channing H. Philbrick
Ludmilla & Robert Prescott
Dr. Ralph W. Prince
Shobha & Venkat Purushotham
David M. Rakov
Eugene R. Renner Jr.
Charles H. Reveal
Mr. & Mrs. Ralph C. Reynolds
Mr. & Mrs. Michael Riedlinger
Frank J. Riedman
Russell R. Roberts
Mr. & Mrs. Earl A. Rodman
Dr. & Mrs. Stephen I. Rosenfeld
Mary & William Rubley
Mr. & Mrs. John G. Ruhland
Jane Lee Sachs
J. Stephen Sandt
Dr. & Mrs. Richard Satran
Mark Schneider
Mr. & Mrs. George S. Scholl
Dale Seim
Carol H. Senfleben

Mr. & Mrs. Carl K. Shuman
Mrs. Vincent Silenzio & Douglas Portman
Mrs. Richard H. Skuse
Carolyn & Jason Slack
Dr. Gale E. Smith
Sue & Andy Snow
Robert M. Sterrett
Bernadette & Thomas Strzepek
Deborah Teska & Michael Shoemaker
Miriam I. Thomas
Sarah H. Trafton & Kevin Hart
Kenneth Troiano
Mr. & Mrs. Pin-Seng Tschang
Richard M. Twichell
Mr. & Mrs. Eugene D. Ulterino
Lynn Vacanti & John Gilroy
Mr. & Mrs. Paul Vacca
Dr. & Mrs. Theodore F. Van Zandt
Mr. & Mrs. Robert W. VanNiel
Charlene Varnis & James Vallino
Paul R. Warren
Sarah Webb & Michael Bobrow
Greg Weinrieb
David E. Weller
Mr. & Mrs. W. James Whelan
Linda & Robert White
Mary & Stanley Widger
Jean Williams
*Sebby Wilson Jacobson
Roberta H. Wilson
Timothy J. Wilson
Mr. & Mrs. Sergeant W. Wise
Mr. & Mrs. G. Robert Witmer Jr.
Robert A. Woodhouse
Mrs. John K. Woodward
Mary Worboys-Turner & Scott Turner
Sharon & David Yates
Ann G. T. Young
Dr. & Mrs. Bernard Zeifang
Barry L. Zimmerman

CORPORATE PARTNERS
The following businesses provide vital support to George Eastman House through membership contributions. We welcome our new partners and salute all who have demonstrated a commitment to the Museum with generous support. Although space allows us to list only those partners at the Associate level and above, we extend our thanks for all gifts to the Museum's 2007 Corporate Membership Campaign, which enable us to continue sharing our collections with the Rochester community and the world.
Corporate Leaders
(\$25,000 and above)
Eastman Kodak Company
ESL Federal Credit Union
Excellus BlueCross BlueShield
Gleason Foundation

Corporate Underwriters
(\$10,000–\$24,999)
JPMorgan Chase & Co.
Preferred Care

Corporate Benefactors
(\$5,000–\$9,999)
Oppenheimer Funds, Inc.
Thomson West
Xerox Corporation

Corporate Sponsors
(\$2,500–\$4,999)
Anonymous (1)
Bausch & Lomb, Inc.
Clover Capital Management, Inc.
Crossroads Abstract
Home Properties of New York
Mark Asset Management Corp.
Rochester Gas and Electric Corporation

Corporate Fellows
(\$1,000–\$2,499)
Constellation Brands, Inc.
DeJoy, Knauf & Blood, LLP
The Dolomite Group, Inc.
Harris Corp., R.F. Communications Div.
Harter Secrest & Emery, LLP
Hickey-Freeman Company, Inc.
KeyBank
Lifetouch, Inc.
G.W. Lisk Co., Inc.
Paychex, Inc.
Performance Technologies, Inc.
St. Paul's Episcopal Church
Wegmans Food Markets, Inc.
Wendy's Restaurants of Rochester, Inc.

Corporate Patrons
(\$500–\$999)
Alleson of Rochester, Inc.
Canandaigua National Bank and Trust Co.
Fieldtex, Inc.
Genencor International
R. L. Kistler, Inc.
Lazer Incorporated
Mann's Jewelers, Inc.
PricewaterhouseCoopers, LLC
Public Abstract Corporation
Qualitrol Corporation

Corporate Associates
(\$250–\$499)
ABR Wholesalers, Inc.
Brinkman International Group, Inc.
Cornell Jewelers
Erdman Anthony & Associates, Inc.
Genesee Reserve Supply, Inc.
KBPaxton, Inc.
Kovalsky-Carr Electric Supply Company, Inc.
Language Intelligence, Ltd.
SWBR Architects & Engineers P.C.

MATCHING GIFTS
We acknowledge the following corporations that generously matched the gifts of their employees, retirees, and members.
*Throughout this report, we use asterisks to thank those individuals who, in addition to making their own gift, applied for matching gift funds from their employers of board affiliates.
AXA Foundation
Bank of America Foundation
Citigroup Foundation
Constellation Brands, Inc.
Dominion Foundation
ExxonMobil Matching Gifts Program
Fannie Mae Foundation
Gannett Match
GE Foundation
Gleason Foundation
Harris Foundation
HSBC Matching Gift Program
IBM Corporation
Johnson & Johnson Family of Companies
JPMorgan Chase Foundation
Key Foundation
OppenheimerFunds, Inc.
Starbucks Coffee
Tektronix Foundation
Thomson West

YEAR-END APPEAL
We gratefully acknowledge these gifts of \$100 and above to the Museum's year-end appeal.
Anne E. Anderson
Anonymous Donors
Gail Avignone & Bart Roselli
Mr. & Mrs. Peter E. Baltzer
Harry Barton
Eva Bauman & Judith Bauman
Mary & Sheldon Berlow
Nancy & Robert Blackmun
Mr. & Mrs. John Blake
James A. Bowers
Garth E. Brokaw
Linda & John Buttrill
Dr. Walter Cooper
Costanza Enterprises, Inc.
Mr. & Mrs. Mark Devaney
Deborah & William Eggers
Martha C. Eggers
Mrs. Charles H. Forbes
Mr. & Mrs. William T. French
Anthony Frothingham
John L. Garrett
Lindsay R. Garrett
Dr. & Mrs. Winston Gaum
Nancy & Kevin Gavagan
Jacquie & Andrew Germanow
Bonnie Gordon & John Pfahl
Dr. Agnes E. Griffith, Ph.D.
Howard T. Hallowell III
Barbara & Daniel Hart
Joanne Hume-Nigro
Dr. & Mrs. Donald R. Hunsberger
Elaine & Bob Jacobsen
James R. Joy
Diane & Melvin Kestner
Dr. Kaz Kikkawa
Mr. & Mrs. James A. Knauf Jr.
Earl L. Landgraf
Mr. & Mrs. Elliott Landsman
Karrie Laughton/Lux Lounge
Allan R. Law, M.D.
Dr. & Mrs. Anthony J. Leone Jr.
Bobbi & Ralph London
Staffan & Lee Lundback
Mr. & Mrs. Edward J. Lynd
Roxanne & James McNamara
Daniel M. Meyers
Akimi & Kazuhiro Mitake
Eric C. Moller
Mr. & Mrs. Patrick E. Montgomery
Kim Novak
Earl J. Pursell
Ruth C. Putter
William Reisch
James Rhem
Kathy & Chuck Rothhaar
Friederike & Joel Seligman
Gloria A. Smith

Leo Smith
Elizabeth Stewart & Anthony Bannon
Mr. & Mrs. Frank P. Strong Jr.
Tasteful Connections, Inc.
Amy E. Van Dussen & Tom Schelemanow
Mr. & Mrs. Harold C. Warren III
Dr. James H. Watters
Janet & Wayne Wisbaum
Mary Worboys-Turner & Scott Turner



International Museum of Photography and Film

Life from every angle.

900 East Avenue
Rochester, NY 14607-2298
www.eastmanhouse.org